

# MWPS-72044

## 24' Frame Utility Building

### **CAUTION!**

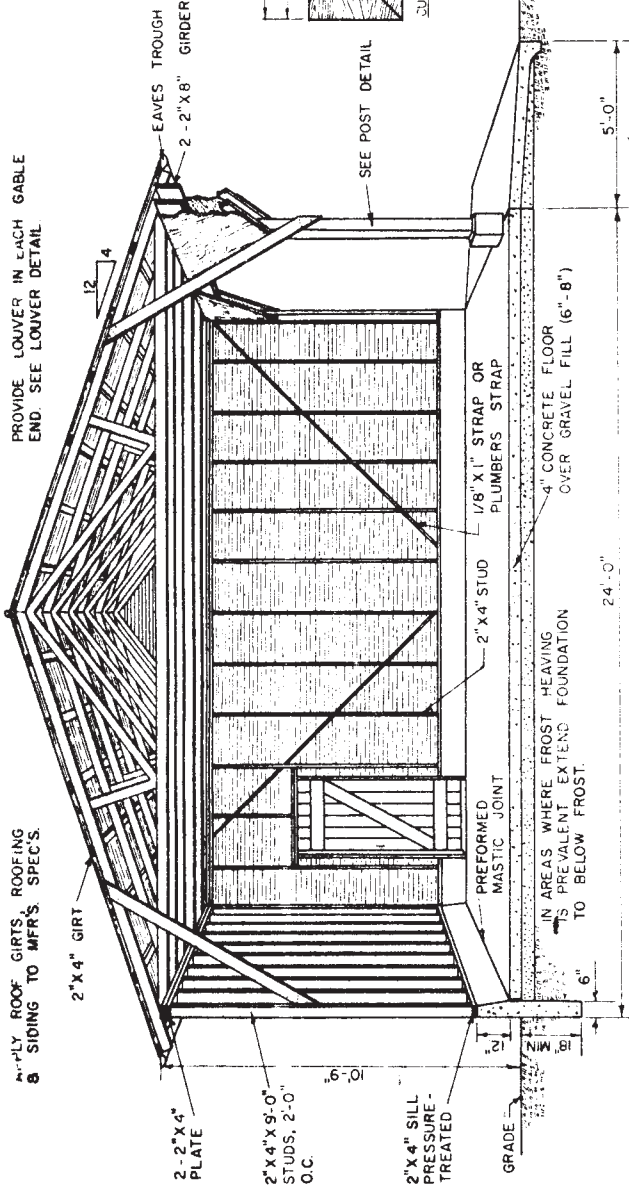
Additional professional services will be required to tailor this plan to your situation, including but not limited to: assurance of compliance with codes and regulations; review of specifications for materials and equipment; supervision of site selection, bid letting and construction; and provision for utilities, waste management, roads or other access. **Furthermore, any deviation from the given specifications may result in structural failure, property damage, and personal injury including loss of life.**

### **WARRANTY DISCLAIMER**

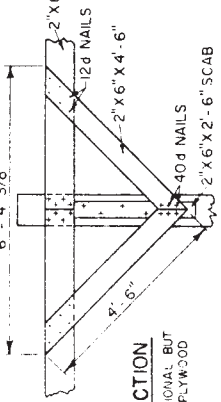
This plan provides conceptual information only. **Neither midwest plan service nor any of the cooperating land-grant universities, or their respective agents or employees, have made, and do not hereby make, any representation, warranty or covenant with respect to the specifications in this plan.** Additional professional services will be required to tailor this plan to your situation, including but not limited to: assurance of compliance with codes and regulations; review of specifications for materials and equipment; supervision of site selection, bid letting and construction; and provision for utilities, waste management, roads or other access.

<b>MIDWEST PLAN SERVICE</b>
Cooperative Extension Work in Agriculture and Home Economics and Agricultural Experiment Stations of North Central Region - USDA Cooperating
24' Frame Utility Building
Title Page
MIDWEST PLAN NO. 72044

APPLY ROOF GIRTS, ROOFING & SIDING TO MFR'S SPECS.

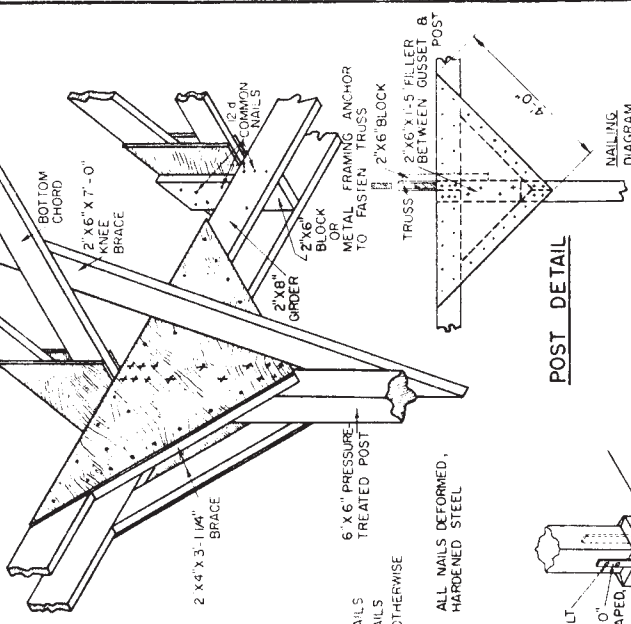
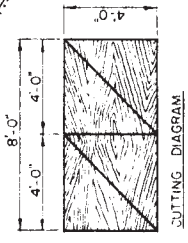
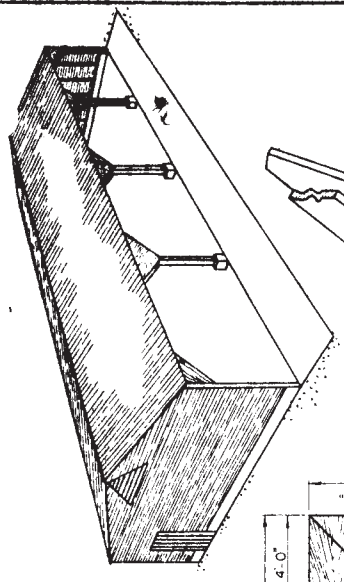
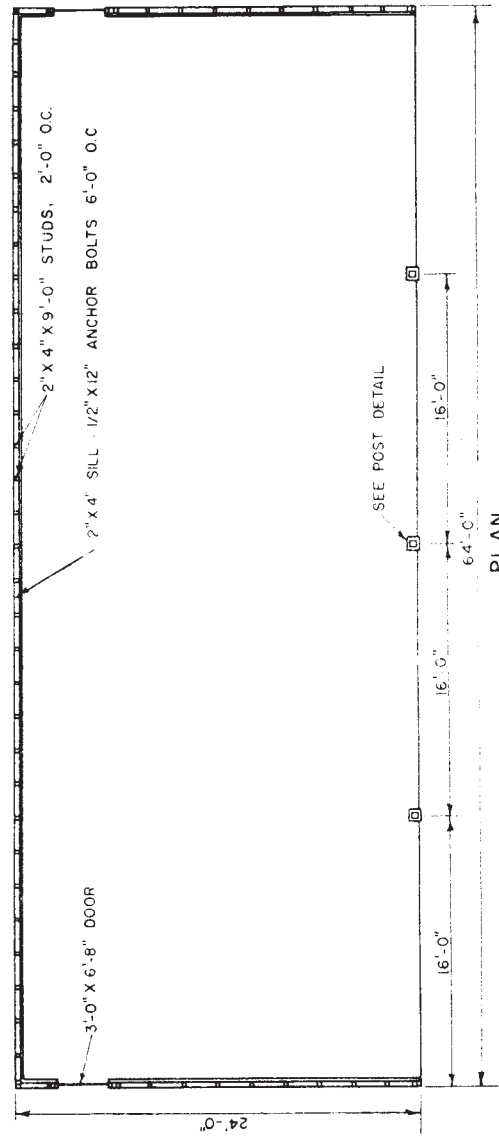


**INTERIOR**

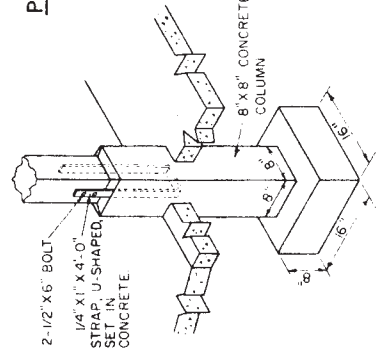


**ALTERNATE CONNECTION**

THIS JOINT IS MORE CONVENTIONAL BUT LESS EFFECTIVE THAN THE PLYWOOD DETAIL SHOWN



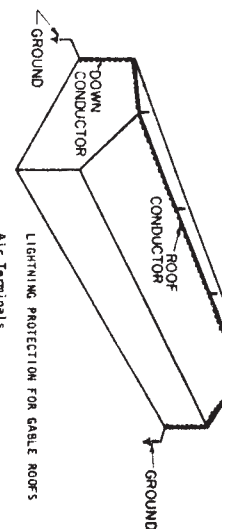
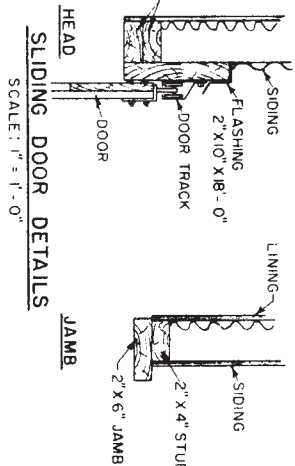
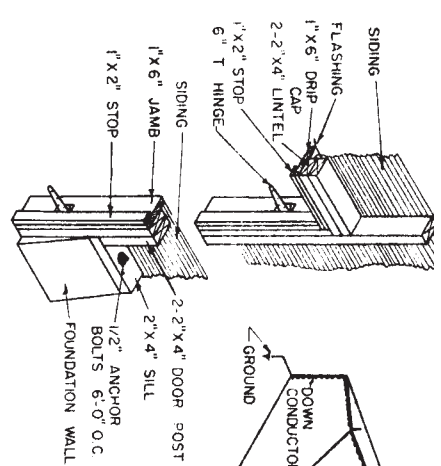
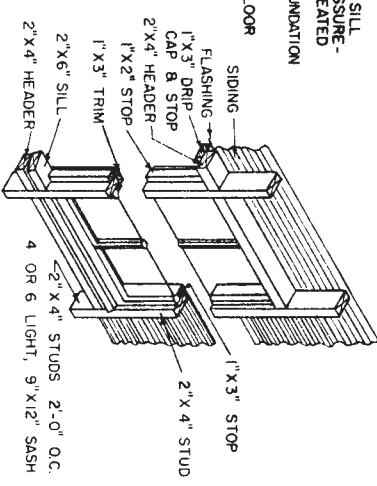
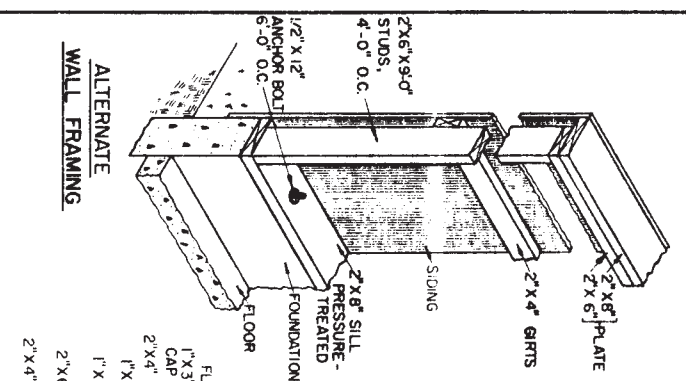
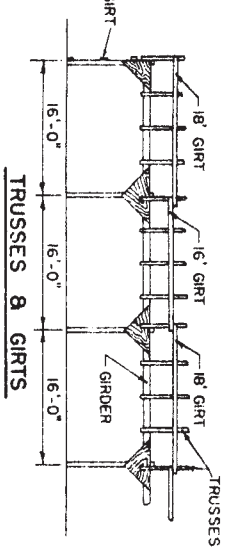
**POST DETAIL**



• 8 d NAILS + 40 d NAILS UNLESS OTHERWISE NOTED

ALL NAILS DEFORMED, HARDENED STEEL

SHEET 3: 24' SPAN TRUSSES	
MIDWEST PLAN SERVICE	
COOPERATIVE EXTENSION WORK IN AGRICULTURE, HOME ECONOMICS AND DOMESTIC ARTS, EXPERIMENT STATIONS OF NORTH CENTRAL REGION, U.S.D.A. COOPERATING	
24' FRAME UTILITY BUILDING	
6011	SHEET 1 OF 3 SHEETS
MIDWEST PLAN NO. 72044	



**LIGHTNING PROTECTION FOR GABLE ROOFS**

**Air Terminals**  
At least 24\"/>

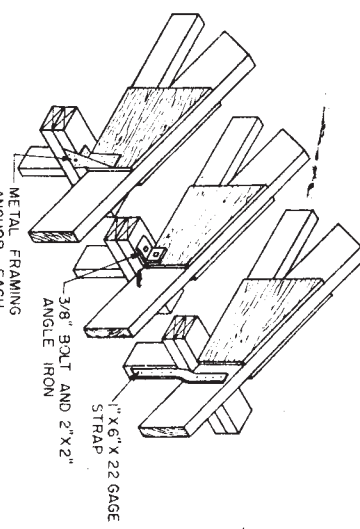
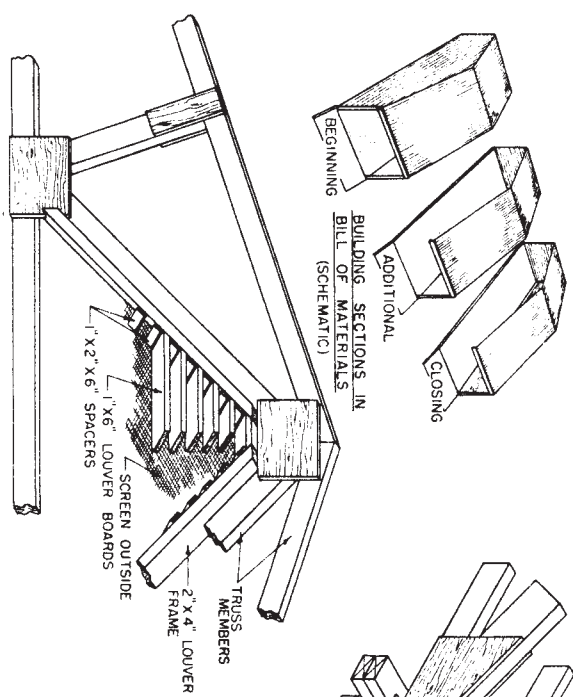
**Conductors**  
Copper: 17 AWG wires, 183#M/1000'  
Aluminum: 14 AWG wires, 95#M/1000'  
Two down conductors, minimum, on opposite corners.  
For bldgs. over 110' long, use one down conductor per 50' add'l length.

**Grounds**  
One ground per down conductor.  
Rods buried at least 10'.  
If water pipe enters bldg., bond at least one down conductor to it.

**Metal Roofs**  
Ground metal roofs without air terminals by attaching 18\"/>

**Master Label**  
For maximum lightning protection obtain a Master Label System as approved by the Underwriters' Laboratories, Inc.

CONCRETE	NO.	BUILDING SECTION (16' LONG)		
		BEGINNING FBM	ADDITIONAL FBM	CLOSING FBM
Foundation	2	4 3/4	1	2
Floor	1	1	4 3/4	1
Apron	1	1	1	1
Mastic	40	16	16	40
Ln. Feet	30	30	30	42 2/3
Posts	1	2	2	2 1/4
Girders	3	14	2	1 1/4
Bracing	2	6	1	3
	1	7	7	45
	45	4	4	45
	7	7	7	7
	7	16	8	16
	24	10 2/3	1	10 2/3
	2	48	8	23
	2	32	2	32
	2	21 1/3	2	21 1/3
	445	2	2	445
	448	160	32	160
	32	448	32	448
	5	8	8	8
	5	25	2	25
	15	2	15	2
	1	28 1/3	4	28 1/3
	1	3 1/2	1	3 1/2



**TRUSS ATTACHMENT**

**SHEET 3: 24' SPAN TRUSSES**

**MIDWEST PLAN SERVICE**  
COOPERATIVE EXTENSION WORK IN AGRICULTURE AND HOME ECONOMICS AND AGRICULTURAL EXPERIMENT STATIONS OF NORTH CENTRAL REGION USDA COOPERATING

**24' FRAME**

**UTILITY BUILDING**

**MIDWEST PLAN NO. 72044**

**6011 SHEET 2 OF 3 SHEETS**

The plans that you are viewing are missing some pages.  
The MWPS archives are incomplete  
and consequently this file can not be updated.  
Sorry for any inconvenience.